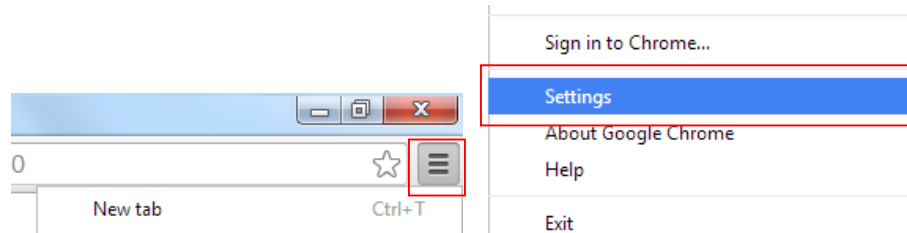


# Enabling Third-Party Cookies in Chrome, Firefox, and Internet Explorer

---

## Enabling third-party cookies in Google Chrome

1. In the upper right-hand corner of browser screen, select the **Chrome menu** (three horizontal bars), and choose **Settings**.



2. At the bottom of the Settings window, click **Show Advanced Settings**.

### Default browser

Make Google Chrome my default browser

Google Chrome is not currently your default browser.

[Show advanced settings...](#)

3. Under Privacy, select **Content Settings**. Under Cookies, select **Allow local data to be set**.

### Privacy

Content settings...

Clear browsing data...

### Content settings

#### Cookies

Allow local data to be set (recommended)

Keep local data only until I quit my browser

Block sites from setting any data

Block third-party cookies and site data

Manage exceptions...

All cookies and site data...

4. Press **Done** to save changes.

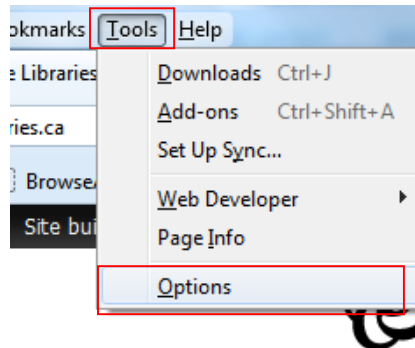


# Enabling Third-Party Cookies in Chrome, Firefox, and Internet Explorer

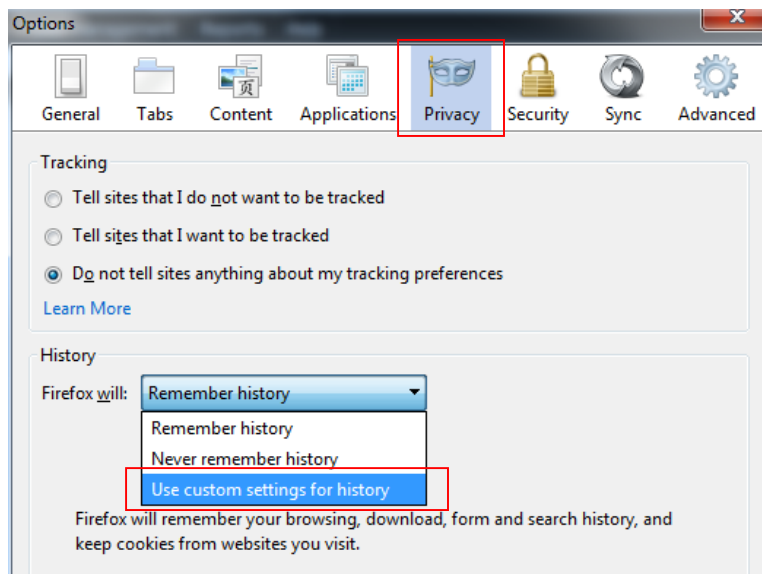
---

## Enabling third-party cookies in Mozilla Firefox

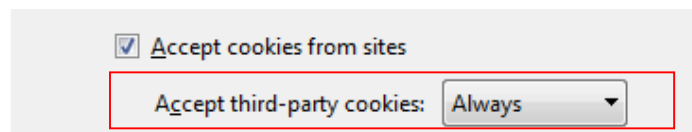
1. On the upper-left toolbar, select **Tools**, and **Options**.



2. In the **Privacy** tab, and choose **Use custom settings for history**.



3. Under Use custom settings for history, make sure **Accept cookies from sites** is checked, and that **Accept third-party cookies** is set to **Always**.



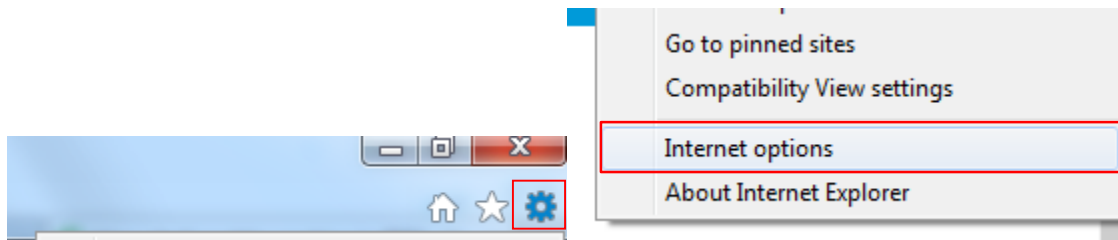
4. Click **OK** to save settings.



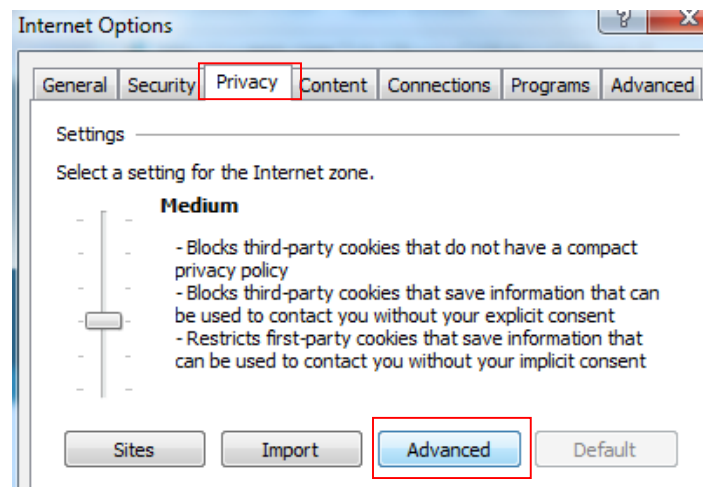
# Enabling Third-Party Cookies in Chrome, Firefox, and Internet Explorer

## Enabling third-party cookies in Internet Explorer

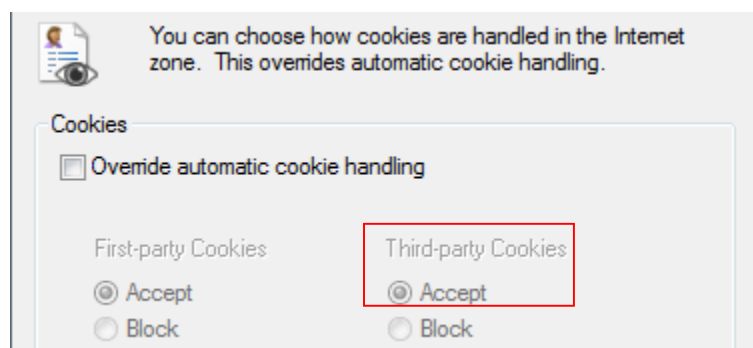
1. In upper right-hand corner of browser screen, Select the **settings “cog”**, and choose **Internet Options**.



2. In the **Privacy** tab, choose **Advanced**.



3. In the Advanced Privacy Settings, make sure the cookies are set to **Accept first-party and third-party cookies**. (If not, change the settings by clicking **Override automatic cookie handling**).



4. Click **OK** to save changes.

